

TR001X

Mechanical Room Thermostat

For boiler and underfloor heating

Features

- Surface Mounting
- On/Off Heating Control
- Analogue
- 10°C ...30°C temperature adjustment scale



Usage

TR001X mechanical room thermostat is used to control the boiler, convector-floor heating valve in rooms or spaces.

Usage Notes

Please read the document carefully. It is designed and manufactured in accordance with TR001X safety rules. Safety warnings must be observed to prevent injury and property damage.

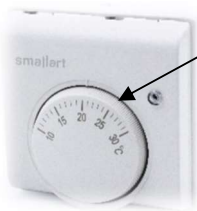
Ordering Information

Product Code	Description	Power
TR001X	10(3)A Output Room Thermostat	230V AC

Technical Specifications

Operating Voltage	230V AC 50/60 Hz
Electrical connection	Terminal Connectors
Measuring Range	10°C ... +30°C
Temperature Accuracy	± 0,5 °C
Outputs	1 pcs 10(3)A
Setpoint Adjustment	10°C ... 30°C (Adjustable)
Mounting	Mounting surface or junction box

Mechanism



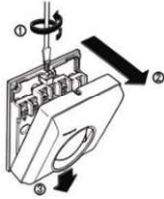
Set the desired room temperature with the temperature adjustment pot.

Mounting Location

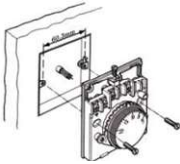
It is recommended to mounting the thermostat indoors. Install at a height of about 1.5 meters from the floor. Device must be mounted a place without direct airflow from a heating/cooling device. Keep the thermostat away from direct sunlight or any heat source to avoid inaccurate readings.



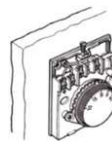
Mounting Instructions



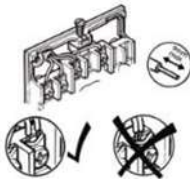
Before turning on the thermostat, disconnect the power or make sure there is no power supply. These operations must be carried out by qualified technicians.



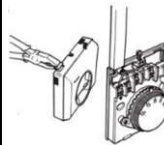
Mounting on wall mounted BS4662 type junction box



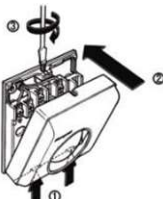
Direct wall mounting



Make terminal connections

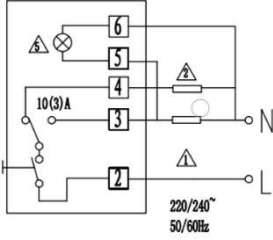


In case the cables come from the wall surface as in the image, open the relevant part of the cover with pliers.



Close the thermostat cover and tighten it with the screw.

Connection Diagram



Dimensions

